

MULTIPURPOSE DRY POWDER (STORED PRESSURE) TYPE FIRE EXTINGUISHER

Suitable for
Class A,B,C & D fires that is involving
Wood, Paper, Paints, Solvents, Liquid Petrol, Cloth,
Flammable Gas, Electric Stated Fire and all
Classes of Fire.



TECHNICAL SPECIFICATIONS

Capacity	ABC 1 KG.	ABC 2 KG.	ABC 4 KG.	ABC 6 KG.	ABC 9 KG.
BIS Specification	IS 15683:2006	IS 15683:2006	IS 15683:2006	IS 15683:2006	IS 15683:2006
Type of Fire	ABC	ABC	ABC	ABC	ABC
Extinguisher Type	Stored Pressure	Stored Pressure	Stored Pressure	Stored Pressure	Stored Pressure
Extinguishing Media	Dry Powder (Mono Ammonium Phosphate) Pressurized with N2 gas	Dry Powder (Mono Ammonium Phosphate) Pressurized with N2 gas	Dry Powder (Mono Ammonium Phosphate) Pressurized with N2 gas	Dry Powder (Mono Ammonium Phosphate) Pressurized with N2 gas	Dry Powder (Mono Ammonium Phosphate) Pressurized with N2 gas
Min. Effective Discharge(%)	90	90	90	90	90
Min Jet Length (mtr)	2	2	4	6	6
Test Pressure (kgf/cm ²)	35	35	35	35	35
Charged Pressure (kgf/cm ²)	15	15	15	15	15
Operation Position	Upright	Upright	Upright	Upright	Upright
Operating Valve	Squeeze Grip Type with Nozzle	Squeeze Grip Type with Nozzle	Squeeze Grip Type with Discharge Pipe & Nozzle	Squeeze Grip Type with Discharge Pipe & Nozzle	Squeeze Grip Type with Discharge Pipe & Nozzle
Operating Temperature	-30° to 55°C	-30° to 55°C	-30° to 55°C	-30° to 55°C	-30° to 55°C
Fire Rating	1A, 8B	2A, 13B	3A, 21B	3A, 34B	4A, 55B

ALSO AVAILABLE IN MAP 90 POWDER





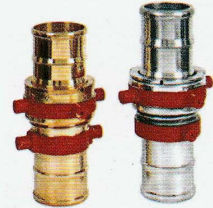
EXIT LIGHT



FIRE BLANKET



BUTTERFLY VALVE



SUCTION



FIRE BEATER



FIRE BUCKET



FIRE MAN AXE



FIRE HOOK



FIRE BELL

FIRE SAFETY ACCESSORIES



FIRE STOP



SAFETY GLOVES



GUM BOOT



BREATHING APPARATUS



FIRE ENTRY SUIT



WATER/FOAM MONITOR



FOAM MAKING BRANCH



TRIPLE PURPOSE NOZZLE



REVOLVING BRANCH

FIRE DETECTION SYSTEMS

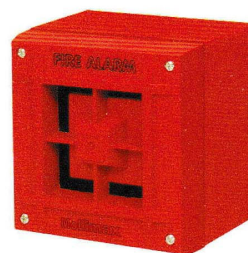
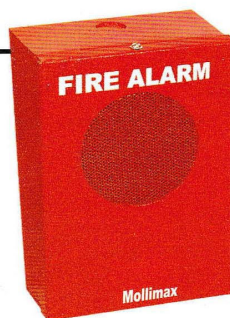
• FIRE ALARM PANEL

- 2 to 16 Zone Fire Alarm Panels.
- LCD Display.
- Zone Test Facility.
- Battery Backup & Charging Facility.
- Common & Zone Hooter Facility.
- P.A. System (optional).



• HOOTER

- Hi-intensive Sound.
- Available in Ms & Abs Body.
- Available in Three Different Tones.
- Also Available with Flasher.



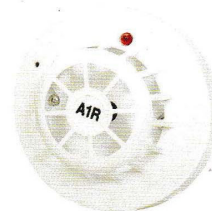
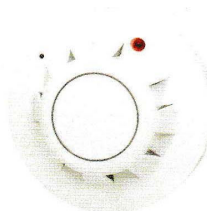
• MANUAL CALL BOX (MCB)

- Available in MS & ABS Body.
- With Chain Hammer & Blinking Facility (Optional).
- Compatible with any Fire Alarm Panel.



• DETECTOR

- UL Listed Smoke & Heat Detectors Available.
- Compatible with any make Fire Alarm Panel.
- Also Available Standalone (Battery Operated).



• ELECTRIC HAND OPERATED SIREN

- Hi-Intensive Sound.
- Available 1/2 Miles to 5 Miles.
- Battery Operated Model also Available.

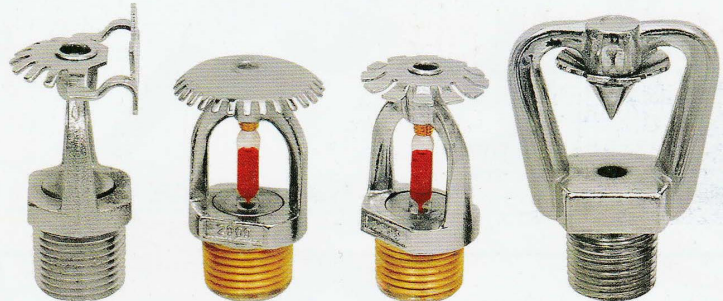


FIRE HYDRANT AND SPRINKLER SYSTEMS

• SPRINKLER & MV NOZZLE

TECHNICAL SPECIFICATIONS

TYPE	PENDANT, UPRIGHT, SIDEWALL, CONCEALED TYPE
Temp. Rating	68°C 79°C 93°C
Glass Bulb Colour	Red, Yellow, Green
Max. Service Pressure	175 psi



• DELIVERY HOSE PIPE

TECHNICAL SPECIFICATIONS

TYPE	RRL HOSE	CP HOSE
BIS Specification	IS:636 TYPE A	IS:8423
Size	38mm, 52mm, 63 mm, 70mm	63 mm
Performance Test	21 (kgf/cm ²)	21 (kgf/cm ²)
Bursting Pressure	35.7 kg	35.7 kg



• FLEXIBLE HOSE PIPE FOR SPRINKLERS

TECHNICAL SPECIFICATIONS

TYPE	FLEXIBLE SPRINKLER HOSE
Size	700 to 1800mm
Working Pressure	14 (kgf/cm ²)
Max. Ambient Temp.	107°C
Bending Angle Flow	Upto 180 degrees



• HOSE CABINET

TECHNICAL SPECIFICATIONS

TYPE	HOSE CABINET
Size (Inches)	30 x 24 x 10 24 x 24 x 10 20 x 20 x 10
Material	MS/Fibre

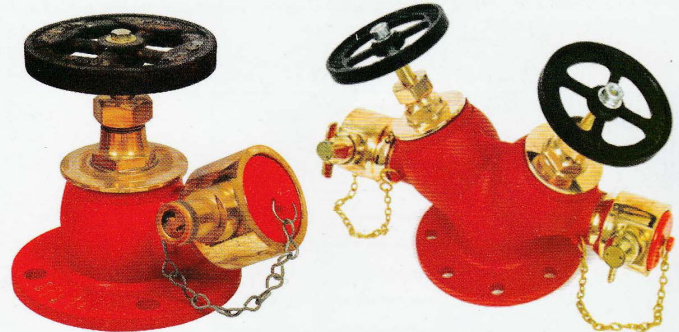


FIRE HYDRANT AND SPRINKLER SYSTEMS

• LANDING VALVE

TECHNICAL SPECIFICATIONS

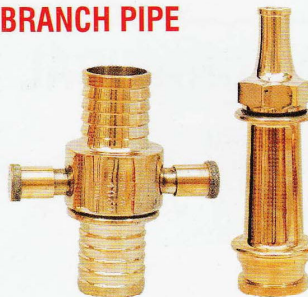
TYPE	GUN METAL & STAINLESS STEEL
BIS Specification	IS:5290
Size	38mm, 52mm, 63 mm
Performance Test	21 (kgf/cm ²)



• HOSE DELIVERY COUPLING & SHORT BRANCH PIPE

TECHNICAL SPECIFICATIONS

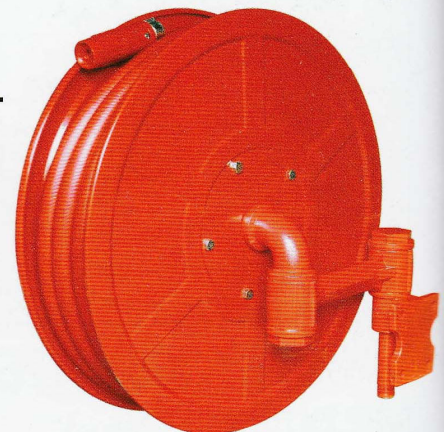
TYPE	GUN METAL & STAINLESS STEEL
BIS Specification	IS:903
Size	38mm, 52mm, 63 mm
Performance Test	21 (kgf/cm ²)



• FIRST AID FIRE SWINGING HOSE REEL WITH NOZZLE

TECHNICAL SPECIFICATIONS

TYPE	A, SWINGING TYPE WALL MOUNTED
BIS Specification	IS:884
Hose Reel Tubing	Rubber Hose IS:444 or IS:12585
Nozzle	IS: 8090-1976
Size	inlet 20mm
Performance Test	21 (kgf/cm ²)



• FIRE BRIGADE CONNECTION

TECHNICAL SPECIFICATIONS

TYPE	GUN METAL STAINLESS STEEL & CAST IRON
Size	Two, Three, Four way (63mm Dia)
Performance	21 (kgf/cm ²)



TROLLEY MOUNTED WATER TYPE FIRE EXTINGUISHER

Suitable for Class A fire that is involving Solid Organic Carbonaceous Material Like Wood, Textile, Paper, Plastic and Rubber.

TECHNICAL SPECIFICATIONS

Capacity	Water Type 50 Liters (Trolley Type)
BIS Specification	IS: 13385
Type of Fire	A
Extinguishing Media	Water
Min. Effective Discharge(%)	95
Min Jet Length (mtr)	6
Test Pressure (kg/cm ²)	35
Operation Position	Upright

Caution
Do not use on Electrical Fire



TROLLEY MOUNTED MECHANICAL FOAM FIRE EXTINGUISHER

Suitable for Class A & B fires that is involving Carbonaceous Materials, Flammable liquids, Petroleum Products or where the blanketing effect is essential.

TECHNICAL SPECIFICATIONS

Capacity	Foam Type 50 Liters (Trolley Type)
BIS Specification	IS: 13386
Type of Fire	A & B
Extinguishing Media	Water & AFFF
Min. Effective Discharge(%)	95
Min Jet Length (mtr)	6
Test Pressure (kg/cm ²)	35
Operation Position	Upright

Caution
Do not use on Electrical Fire



TROLLEY MOUNTED DRY CHEMICAL POWDER FIRE EXTINGUISHER

Suitable for Class B & C fires that is involving Flammable Liquid Petroleum Products, Flammable Gases, Plastics & Electrical Fires.

TECHNICAL SPECIFICATIONS

Capacity	DCP 25 Kgs (Trolley Type)	DCP 50 Kgs (Trolley Type)	DCP 75 Kgs (Trolley Type)
BIS Specification	IS: 10658	IS: 10658	IS: 10658
Type of Fire	BC	BC	BC
Extinguishing Media	Dry Chemical Powder	Dry Chemical Powder	Dry Chemical Powder
Min. Effective Discharge(%)	90	90	90
Min Jet Length (mtr)	6	8	10
Test Pressure (kg/cm ²)	35	35	35
Operation Position	Upright	Upright	Upright



FIRE DETECTION SYSTEMS

• FIRE ALARM PANEL

- 2 to 16 Zone Fire Alarm Panels.
- LCD Display.
- Zone Test Facility.
- Battery Backup & Charging Facility.
- Common & Zone Hooter Facility.
- P.A. System (optional).



• HOOTER

- Hi-intensive Sound.
- Available in Ms & Abs Body.
- Available in Three Different Tones.
- Also Available with Flasher.



• MANUAL CALL BOX (MCB)

- Available in MS & ABS Body.
- With Chain Hammer & Blinking Facility (Optional).
- Compatible with any Fire Alarm Panel.



• DETECTOR

- UL Listed Smoke & Heat Detectors Available.
- Compatible with any make Fire Alarm Panel.
- Also Available Standalone (Battery Operated).

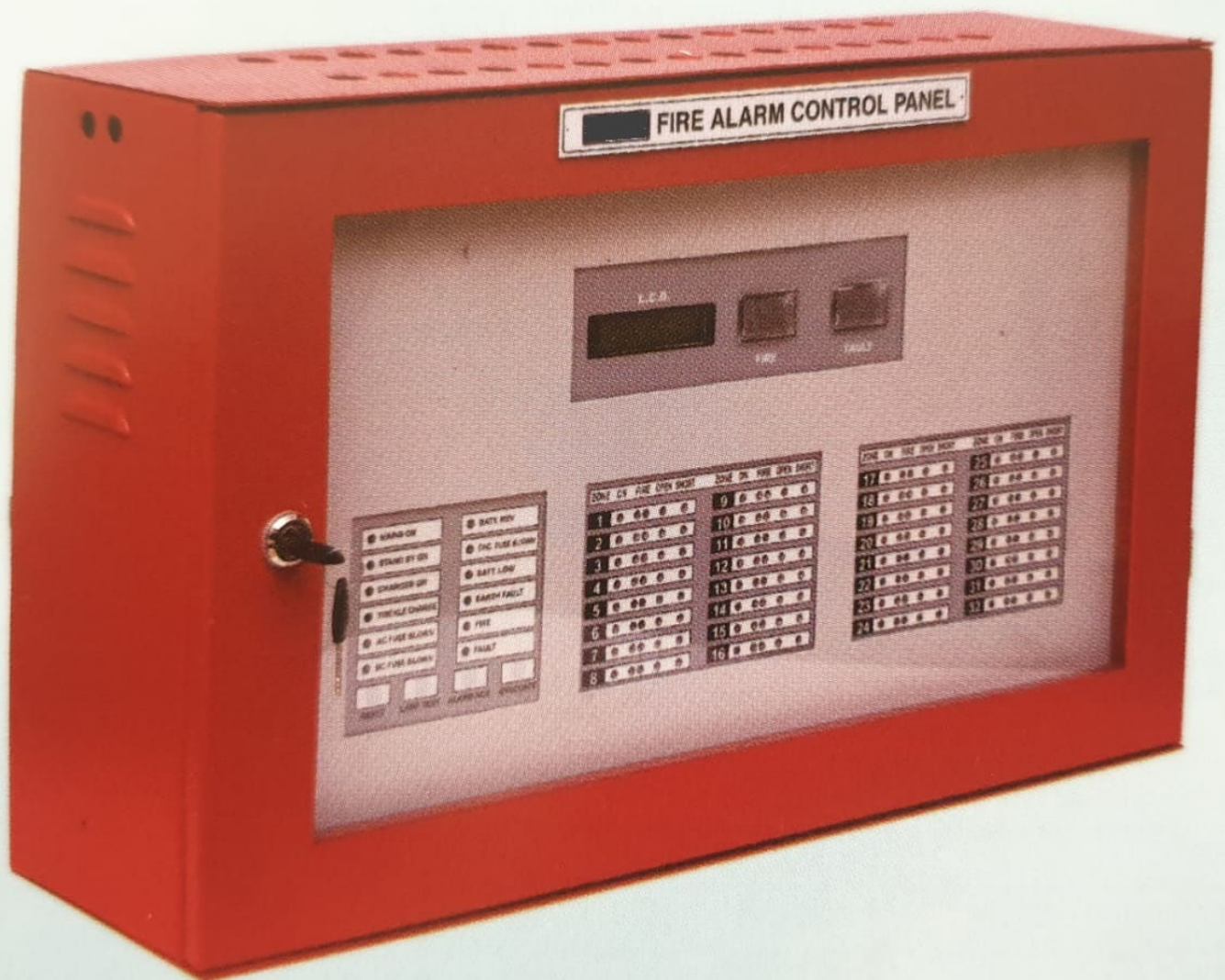


• ELECTRIC HAND OPERATED SIREN

- Hi-Intensive Sound.
- Available 1/2 Miles to 5 Miles.
- Battery Operated Model also Available.



FIRE ALARM PANEL



DEFENDER - APD - 32Z

CLEAN AGENT TYPE FIRE EXTINGUISHER

Suitable for
Class A,B,C & D fires that is involving
Wood, Paper, Paints, Solvents, Liquid Petrol, Cloth,
Flammable Gas, Live Electric Fire,
Delicate Machineries and All Classes of Fire.

TECHNICAL SPECIFICATIONS

Capacity	CLEAN AGENT 1 KG.	CLEAN AGENT 2 KG.	CLEAN AGENT 4KG.
BIS Specification	IS 15683:2006	IS 15683:2006	IS 15683:2006
Type of Fire	ABC	ABC	ABC
Extinguisher Type	Stored Pressure	Stored Pressure	Stored Pressure
Extinguishing Media	Clean Agent	Clean Agent	Clean Agent
Min Jet Length (mtr)	2	2	4
Test Pressure (kg/cm ²)	35	35	35
Operation Position	Upright	Upright	Upright
Operating Valve	Squeeze Grip Type with Nozzle	Squeeze Grip Type with Nozzle	Squeeze Grip Type with Discharge Pipe & Nozzle
Operating Temperature	-30° to 55°C	-30° to 55°C	-30° to 55°C

Capacity	CLEAN AGENT 6 KG.	CLEAN AGENT 9 KG.
BIS Specification	IS 15683:2006	IS 15683:2006
Type of Fire	ABC	ABC
Extinguisher Type	Stored Pressure	Stored Pressure
Extinguishing Media	Clean Agent	Clean Agent
Min Jet Length (mtr)	6	6
Test Pressure (kg/cm ²)	35	35
Operation Position	Upright	Upright
Operating Valve	Squeeze Grip Type with Discharge Pipe & Nozzle	Squeeze Grip Type with Discharge Pipe & Nozzle
Operating Temperature	-30° to 55°C	-30° to 55°C



Modular Automatic Ceiling Mounted TYPE FIRE EXTINGUISHER

Suitable for
Class A,B,C & D fires that is involving
Wood, Paper, Paints, Solvents, Liquid Petroleum Products,
Cloth, Flammable Gas, Live Electric Fire and all
Classes of Fire.

TECHNICAL SPECIFICATIONS

Capacity	5 KG.	10 KG.	15 KG.
Type of Fire	ABC	ABC	ABC
Extinguisher Type	Stored Pressure Ceiling Mounted	Stored Pressure Ceiling Mounted	Stored Pressure Ceiling Mounted
Extinguishing Media	DRY POWDER/CLEAN AGENT	DRY POWDER/CLEAN AGENT	DRY POWDER/CLEAN AGENT
Test Pressure (kg/cm ²)	35	35	35
Operating Temperature	68°C	68°C	68°C



DRY CHEMICAL POWDER TYPE FIRE EXTINGUISHER

Suitable for
Class B & C fires that is involving
Flammable Liquid Petroleum Products, Flammable Gases,
Plastics & Electrical Fires.

TECHNICAL SPECIFICATIONS

Capacity	DCP 4 KG.	DCP 6 KG.	DCP 9 KG.
BIS Specification	IS 15683:2006	IS 15683:2006	IS 15683:2006
Type of Fire	BC	BC	BC
Extinguisher Type	Stored Pressure/Gas Cartridge	Stored Pressure/Gas Cartridge	Stored Pressure/Gas Cartridge
Extinguishing Media	Dry Powder Sodium Bi Carbonate	Dry Powder Sodium Bi Carbonate	Dry Powder Sodium Bi Carbonate
Min. Effective Discharge(%)	90	90	90
Min Jet Length (mtr)	4	6	6
Test Pressure (kg/cm ²)	35	35	35
Charged Pressure (kg/cm ²)	15	15	15
Operation Position	Upright	Upright	Upright
Operating Valve	Squeeze Grip Type with Discharge Pipe & Nozzle	Squeeze Grip Type with Discharge Pipe & Nozzle	Squeeze Grip Type with Discharge Pipe & Nozzle
Operating Temperature	-30° to 55°C	-30° to 55°C	-30° to 55°C
Fire Rating	21B	34B	55B



CARBON DI-OXIDE TYPE FIRE EXTINGUISHER

Suitable for
Class B & C fires that is involving
material like Fabric, Oil, Gases,
Live Electric & Delicate Machineries.

TECHNICAL SPECIFICATIONS

Capacity	Co ₂ 2 KG.	Co ₂ 3 KG.	Co ₂ 4.5 KG.
BIS Specification	IS 15683:2006	IS 15683:2006	IS 15683:2006
Type of Fire	BC	BC	BC
Extinguisher Type	Stored Pressure	Stored Pressure	Stored Pressure
Extinguishing Media	CARBON DI-OXIDE	CARBON DI-OXIDE	CARBON DI-OXIDE
Min Jet Length (mtr)	2	2	3
Test Pressure (kg/cm ²)	250	250	250
Operation Position	Upright	Upright	Upright
Operating Valve	Squeeze Grip /Wheel Type	Squeeze Grip /Wheel Type	Wheel Type
Operating Temperature	-30° to 55°C	-30° to 55°C	-30° to 55°C
Fire Rating	8B	8B	21B

Capacity	Co ₂ 6.5 KG.	Co ₂ 9 KG.	Co ₂ 22.5 KG.
BIS Specification	IS:2878	IS:2878	IS:2878
Type of Fire	BC	BC	BC
Extinguisher Type	Stored Pressure	Stored Pressure	Stored Pressure
Extinguishing Media	CARBON DI-OXIDE	CARBON DI-OXIDE	CARBON DI-OXIDE
Min Jet Length (mtr)	3	3	3
Test Pressure (kg/cm ²)	250	250	250
Operation Position	Upright	Upright	Upright
Operating Valve	Wheel Type	Wheel Type	Wheel Type
Operating Temperature	-30° to 55°C	-30° to 55°C	-30° to 55°C
Fire Rating	—	—	—

